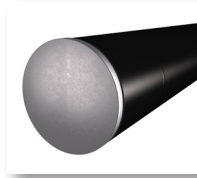




**End Plates**



**CJ Teeth**



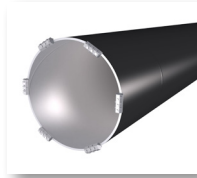
**Conical Point**



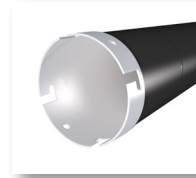
**Cutting Shoe**



**Hex Bar Cutting Teeth**



**J Slots**



**Reinforcing Band**



**Sheet Pipe Connectors**



**Contacts:**

Missy Hicks - Structural Inside Sales  
803-420-6293

[mhicks@american-usa.com](mailto:mhicks@american-usa.com)

-

John Luka - Chief Engineer  
803-695-2206

[jluka@american-usa.com](mailto:jluka@american-usa.com)

[www.american-usa.com](http://www.american-usa.com)



**AMERICAN**

SPIRALWELD PIPE

THE RIGHT WAY

**Structural Pipe Products**

**Driven Pile  
Drilled Shaft Casings  
Horizontal Casings  
Well Casings  
Structural Supports**

## QUALITY ASSURANCE

### Standards

ASTM A252, Standard Specification for Welded and Seamless Steel Pipe Piles

ASTM A139, Standard Specification for Electric-Fusion (Arc)-Welded Steel Pipe

### Certifications

Steel Plate Fabricators Association (SPFA)  
FDOT MM-SC-004  
NCDOT WS9

### Materials

M&M domestic steel pipe meets AIS standard.  
ASTM A252, ASTM A139, or AWWA C200.  
Maximum carbon content of 0.25%.  
Spiral pipe wall thicknesses up to 1" nominal.

## MANUFACTURING STANDARDS

### ASTM A252

Yield Point or Yield Strength, minimum, ksi

Grade 1	Grade 2	Grade 3	Mod 50ksi
30	35	45	50

### ASTM A139 (standard includes factory hydrotest)

Yield Point or Yield Strength, minimum, ksi

Grade B	Grade C	Grade D	Grade E
35	42	46	52

Pipe can be furnished with mill-cut ends, beveled ends, and various pipe pile fabrications such as bevels, end plates, conical points, cutting shoes, reinforcing bands with J-slots and lifting holes, sheet pile connectors, and other custom fabrications.

Pipe can be shipped via truck or rail.

## East Coast Operations

- Two spiral-welding mills and hydrotester.
- 24" – 144" OD or ID pipe are available.
- Rolled-and-welded cans (CNC 4-roll machine).  
31" – 144" OD or ID pipe are available.  
Wall thicknesses up to 2". ASTM A36, ASTM A572, or other specification.
- 85' maximum lengths; 54.5' max for machine hydrostatic testing.

## Great Lakes Operations

- One spiral-welding mill and hydrotester.
- 24" – 100" OD or ID pipe are available.
- 60' maximum lengths; 59' max for machine hydrostatic testing.

## Southwest Operations

- One spiral-welding mill and hydrotester.
- 24" – 144" OD or ID pipe are available.
- 55' maximum lengths

